

The Zukini Method

HONKY TONK SONGBOOK



- The Zukini Method -
Zukinimethod.weebly.com



A Fool Such As I

....

C E7 F C

Par-don me, if I'm sen - ti - men - tal, when we say good - bye. Don't be

G C E7

an - gry with me, should I cry ——— When you're gone, then I'll dream a lit-tle

F C C G C

dream as years go by. Now and then, there's a fool, such as I. Now and

F F#dim C G

then there's a fool such as I am o - ver you. You taught me how to

D7 G G7 C E7

love and now you say that we are through, I'm a fool, but I'll love you dear, un -

F C C G7 C.

til the day I die, Now and then, there's a fool such as I.

....

Always Late

(With Your Kisses)

Lefty Frizzell

....

Swing

A

Al-ways³— late with your kisses. won't you come to my arms sweet

E7 A D A A

dar - ling and stay, Al-ways³— late with your kisses. why oh why do you—

E7 A D A B7

— want to do me this way— How long do you think I can wait when I know your

E A D A A

always late, Always³— late with your kis-ses. why oh why do you—

E7 A

— want to do me this way—

Blue Eyes Crying In The Rain

Fred Rose

G D G

In the twi-light glow I see you blue eyes cry-ing in the rain
Now my hair has turned to sil-ver - all my life I've loved in vain

G D G

when we kissed good bye and par-ted I knew we'd never meet a - gain
I can see your star in heav-en blue eyes cry - ing in the rain

C G D

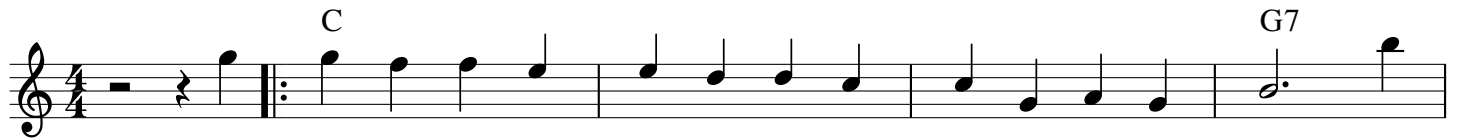
love is like a dy-ing ember on - ly memor ies re - main
some day when we meet up yonder we'll stroll hand in hand a - gain

G D G

through the a - ges I'll re - mem-ber blue eyes crying in the rain
in a land that knows no part-ing blue eyes crying in the rain.

Cold, Cold Heart

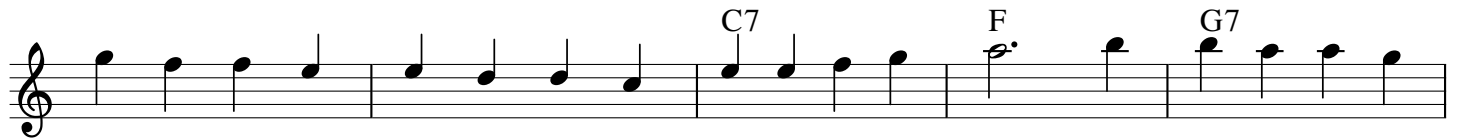
Hank Williams - 1951



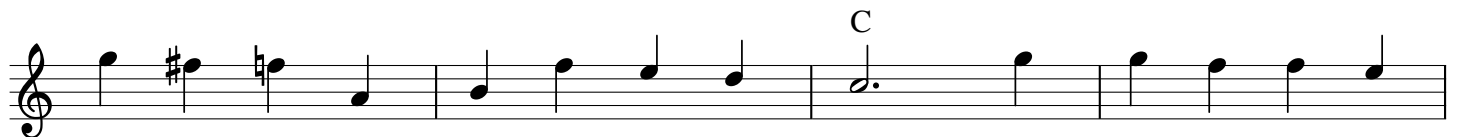
I tried so hard my dear to show that you're my ev - ry dream yet
nev - er know how much it hurts to see you sit and cry you



you're a - fraid each thing I do is just some e - vil scheme a
know you need and want my love yet you're a - fraid to try why



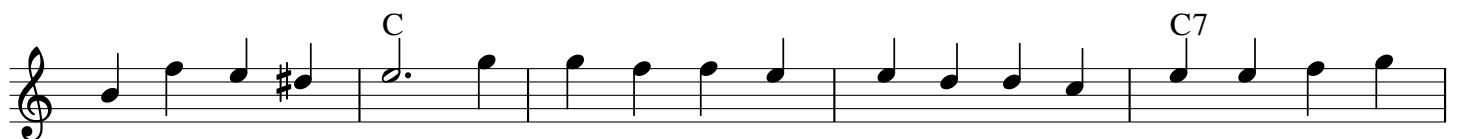
mem - ry from your lone - some past keeps us so far a - part why cant I free your
so you run and hide from life to try it just aint smart? why cant I free your



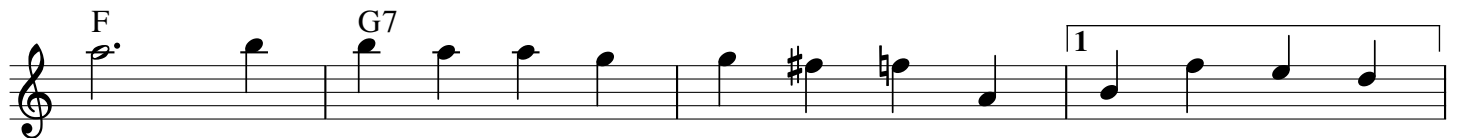
doubt - ful mind and melt your cold, cold heart? an - oth - er love be -
doubt - ful mind and melt your cold cold heart? there was a time when



fore my time made you heart sad and blue and so my heart is pay - ing now for
I be - lieved that you be - longed to me but now I know your heart is shack - led



things we did nt do In an - ger un - kind words are said that make the tear - drops
to a mem - o - ry the more I learn to care for you the more we drift a -



start why cant I free your doubt - ful mind and melt your cold cold
part why cant I free your doubt - ful mind and melt your cold cold



heart? you'll melt your cold cold heart.
heart?

Crying My Blues Away

Alex Hill (1928)

C D7

I sit around and Twiddlemy thumbs, but, There's not a sound and

G7 C G7

no-bo-dy comes with my head hanging low, I'm crying my blues a - way

C D7

Hoping you'll come for I love you still I don't know why but

G7 C C7

I always will with my head hanging low, I'm crying my blues a - way evry

F7 C A7

day, thoughts of you keep me sob-bing, sob-bing, and my poor heart keeps on

Dm7 G7 C

throb - bing, throb - bing. Crying for you, no - bo-dy but you, It

D7 G7

seems there is no-thing else I can do, my head hanging low, I'm crying my blues A-

C

way.

Faded Love

("Darling Nellie Gray")


Bob Wills

E7 A D A E



As I look at the let-ters that to me were so sweet, It's you that I am think-ing of,
As I think of the past and all the pleasures we had, As I watch the mating of the dove,

A D A E A



As I read the lines that to me were so sweet, I re - mem - ber our fad - ed love.
It was in the spring time when you said good - bye, I re - mem - ber our fad - ed love.

A D A E



I miss you darlin' e - ve - ry more, day by day, as Hea - ven would miss the stars a - bove, —

D G D A D A7




— With e - very heart beat I — still think of you, and re - mem - ber our fad - ed love.

(Fiddle Solo In D major)

D G D A D G



D A D D G D A



D G D A D D# E7



Heartaches By The Number

Ray Price

A D

Heart - ache num - ber one was when you left me; _____ I
Heart - ache number three was when you called me, _____ and

E A

nev - er knew that I could hurt this way. _____ And heart - ache num - ber
said that you were com - ing back to stay. _____ With hope - ful heart I

two was when you came back a - gain; You came back and
wait - ed for your knock on the door, I wait - ed but you

A

ne - ver meant to stay. _____ Now I've got Heart - aches by the num - ber,
must have lost your way. _____

D E E A

troubles by the score, ev-'ry day you love me less, each day I love you more. _____

A D

____ Yes, I've got heart - aches by the num - ber a love that I can't win, but the

E E A

day that I stop count - ing, that's the day my world will end.

Heartaches

Patsy Cline

Cmaj B7 C Bb7 A7

Hea - rt aches, Hear_ t aches, My lov-ing you meant on-ly Heart - aches,

Dm G7 C6 D9 Dm7 G7

Your kiss was such a sacred thing to me, I can't be-live it's just a bur - ning mem - o-ry,

Cmaj B7 C Bb7 A7

Hea - rt ach - es, Hear_ t ach - es, What does it matter how my heart breaks,

Dm ?? C6 D7 Dm7 G7 C

I should be hap-py with some - one new, but my hea-rtaches for you.

I Fall To Pieces

Patsy Cline

B \flat Eb F Eb F B \flat B \flat

I fall to pie-ces, _____ Each time I see you a gain _____ I
I fall to pie-ces, _____ Each time some - one speaks your name. _____ I

E \flat F E \flat F E \flat

fall to pie - ces, _____ how can I be just a friend. _____ You
fall to pie - ces, _____ Time on - ly adds to the flame. _____ You

B \flat E \flat

want me to act like we ne - ver kissed, _____ You want me
tell me to find some - one else to love, _____ Some one who

F B \flat

to for-get, _____ pretend we nev - er met. _____ and I've
wants me to, _____ the way you used to do. _____ but each

E \flat F B \flat

tried _____ and I've tried but I have - n't yet _____ you walk
time _____ I go out with some one new _____ you walk

E \flat F B \flat

by and I fall to pie - ces. _____
by and I fall to pie - ces. _____

E \flat F B \flat

I'll Be There

(If You Ever Want Me By Your Side)

Ray Price

C



There ain't no chains strong e-nough-to hold me ain't no
There ain't no ropes tight e-nough to bind me, look for



breeze big e-nough to slow me. Nev-er have seen a riv - er that's too
me, ho - ney you will find me. An - y old time you're rea - dy with your

G

C



wide, _____ There ain't no jail tight enough to lock me ain't no
charms _____ Look for me, I'll _____ be _____ wait - ing, there won't

C

G

C



man big enough to stop me. I'll be there, if you ever want me by your side. _____
be an - y hes - i - ta - tion. I'll be there, if you ever want me by your side. _____

G

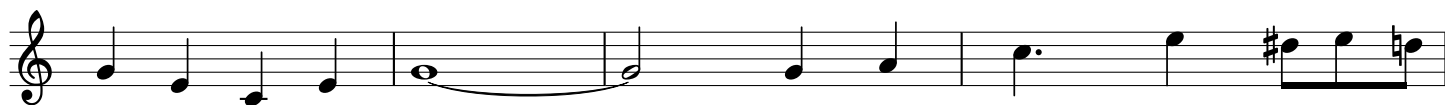
C



_____ so Love me, if you're e-ver gon-na love me. never have seen a

G

C



road too ruff to ride, _____ There ain't no chains strong enough to

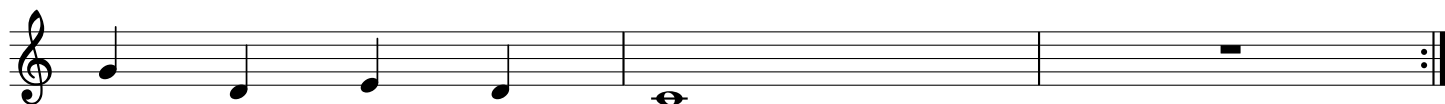
C



hold me ain't no breeze big enough to slow me. I'll be there if you e-ver

G

C



want me by your side.

I Still Miss Someone

by Johnny Cash

At my door the leaves are fall - ing, — the cold wild wind will
I go out to a par - ty, — and look for a lit - tle

come. Sweet - hearts walk by to - ge - ther — and I still
fun. But I find a dark - end cor - ner, — for I still

Miss Some - One. No, I nev - er got ov - er those blue eyes —
Miss Some - One. I

I see them — ev - 'ry - where. I miss those arms that held me

when all the love was there. I won - der if she's sor - ry,

for leaving what we'd be - gun. There's some - one for me

some - where And I Still Miss Some - One.

Move It On Over

Hank Williams

C



Came in last night at half past ten, — that ba - by of mine would-n't
This dog-house here is might - y small, — but its better than no

C7 F7 C



let me in — So Move It On O-ver, (Move It On O-ver) Move it on o-ver.
house at all — So ease it on o-ver, drag it on o-ver.

G7 C



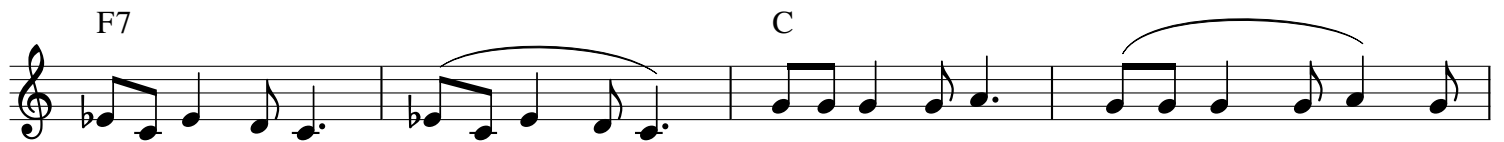
(Move it on O-ver) Move o-ver li'l dog 'cause the big dog's mov in — in. — She
Move o-ver old dog 'cause a new dog's mov in' — in. — She

C C7



changed the lock on our front door, — now my door key don't fit no more — So
told me not to play a - round — but I done let the deal go down — So

F7 C



get it on o-ver, (Move It On O-ver) scoot it on o-ver (Move It On O-ver) Move
pack it on o-ver tote it on o-ver Move

G7 C



o - ver skin - ny dog 'cause the fat dog's mov-in' — in. —
o - ver nice dog 'cause a bad dog's mov-in' — in. —

Nobody's Darling But Mine

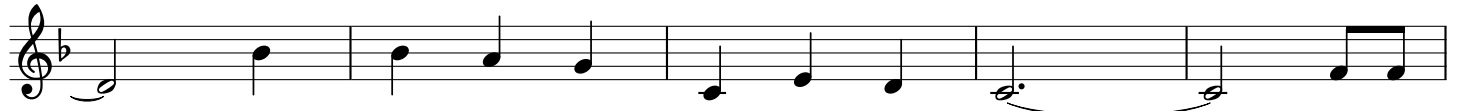
Merle Haggard

F B♭



Come lay by my side lit - tle dar - lin' _____
Your as sweet as the flow - ers of spring - time, _____
good bye good bye lit - tle dar - lin', _____

Gm C7 F



_____ Come lay your cool hand on my brow _____
_____ You're as sweet as the dew from the rose _____ And I'd
_____ I'm lea - ving this cold world be - hind. _____ So _____

F B♭



Pro - mise me that you will al - ways _____
Rath - er be some - bo - dy's dar - lin', _____
pro - mis me that you will ne - ver _____

Gm C7 F



_____ Be no - bo - dy's dar - lin' but mine.
_____ Than a poor boy that no - bo - dy knows.
_____ be no - bo - dy's dar - lin' but mine.

F B♭ Gm C7 F



Be No-bo-dy's dar-lin' but mine, love, Be hon-est, be faith-ful, be kind. _____

F B♭ Gm C7 F



Pro-mise me that you will ne-ver _____ be no-bo-dy's dar-lin' but mine. _____

♩ = 180

Pick Me Up On Your Way Down

Musical notation for the first line of the song, including a repeat sign and chords G and C.

1.You were mine for just a while, now you're put-tin' on the style, and you've
2.They have changed your at-ti-tude, made you haught-y and so rude, your new

Musical notation for the second line of the song, including chords D, G, and G.

nev-er once looked back at your home a-cross the track. You're the gos-sip of the
friends can take the blame, un-derneath you're still the same. When you find these things are

Musical notation for the third line of the song, including chords C, D, and G.

town, but my heart can still be found, where you tossed it on the ground, pick me up on your way down.
true, I'll be wait-ing here for you, as you tum-ble to the ground, pick me up on your way down.

Musical notation for the fourth line of the song, including chords G and C.

Pick Me Up On Your Way Down, when you're blue and all a-lone, when their

Musical notation for the fifth line of the song, including chords D and G.

glam-or starts to bore you, come on back where you be long. You may

Musical notation for the sixth line of the song, including chords G and C.

be their pride and joy, but they'll find an-oth-er toy, then they'll

Musical notation for the seventh line of the song, including chords D and G, and a double bar line.

take a-way your crown, Pick Me Up On Your Way Down. _____ 2.They have

Take These Chains From My Heart

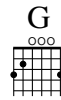
Fred Rose

(And Set Me Free)

♩ = 120



1. Take the chains from my heart and set me free,
 2. Take these tears from my eyes and let me see,
 3. Give my heart just a word of sym- pa - thy,



You've grown cold and no long - er care for me. All my
 Just a spark of the love that used to be. If you
 Be as kind to my heart as you can be. And if

G7

C



faith in you is gone, but the heart - ache lin - gers on
 love some - bo - dy new, let me find a new love too,
 you no lon - ger care, for the love that's beat - ing there,

A7

D7

G



, Take the chains from my heart and set me free.
 — Take the chains from my heart and set me free.
 — Take these chains from my heart and set me free.

Walkin' After Midnight

Patsy Cline

C F7

I go out walk in' af-ter mid - night Out in the moonlight, just
I walk for miles a-long the high - way. Well, that's just my way of

C C C

like we used to do. I'm al-ways walk-in' af-ter midnight search-in' for you.
say-in' I love you. I'm allways walk-in' af-ter midnight search-in' for you.

1. 2. F

(I walk for) I stop to see a weepin' wil-low, cryin' on his pil-low,

C C7 F

Maybe he's cry - in' for me And as the skies turn gloomy, the

C G7

nightwinds whis - per to me. I'm lonesome as I can be I go out

C F7

walk in' af-ter mid - night Out in the star light, just

C F7 G7 C

hoping you may be some-where a walk-in' af-ter midnight search-in' for me.

You Win Again

Hank Williams

C F

The news is out all o - ver town that you've been
I'm sor - ry for your vic - tims now 'Cause soon his

C G7 C

seen a - run - nin' 'round I know that I should leave, but
head like mine will bow He'll give his heart but all in

F C G7 C

then, I just can't go You Win A - gain. This heart of
vain And some-day say, You Win A - gain You have no

F C (D7) G7

mine could nev - er see what ev' - ry - bod - y knew but me
heart. you have no shame You take true love and give the blame

C F

Just trust - ing you was my great sin
I guess that I should not com - plain

C G7 C

What can I do, You Win A - gain.
I love you still You Win A - gain.

- Other Zukini Songbooks:
 - - Zukini Method 1a - Two Chord Songs
 - - Zukini Method 1b - Three Chord Songs

- Coming Next -
 - - Zukini Songs for Learning Spanish
 - - Zukini Songs for Learning French
 - - Zukini book of New Orleans RNB

- Instrument Repair -
 - Webb's Music
 - Marty The Piano Guy
 - David the Accordion Guy
 - Etc....

Contents

- 1) A Fool Such As I
- 2) Always Late With Your Kisses
- 3) Blue Eyes Crying In The Rain
- 4) Cold Cold Heart
- 5) Crying My Blues Away
- 6) Faded Love
- 7) Heartaches (Patsy Cline)
- 8) Heartaches By The Number
- 9) I Fall To Pieces
- 10) I'll Be There (Ray Price)
- 11) I Still Miss Someone
- 12) Move It On Over
- 13) Nobody's Darlin' But Mine
- 14) Pick Me Up On Your Way Down
- 15) Take These Chains
- 16) Walkin' After Midnight
- 17) You Win Again

Under Construction!

Las Update: November 4, 2018

Creative Commons

Copy-Left

(Share Freely)



Copyleft



**Creative
Commons**